

Factory 102nd&201st Room,19th Building,No. 696,5th Tel./Fax:+86-577-86896383 Mobile:+86 18958729855  
 Physical Binhai Road,Economic and Technological Email:sales1@rosemoun.com.cn&sales@rosemoun.com.cn  
 Address: Development Zone Wenzhou,Zhejiang P.R.China website:www.rosemou.com&rosemoun.en.alibaba.com

**Product Model** :[SG-YL41-206](#)

**Product Sizes** :DN15 to DN50(1/2”Inch to 2”Inch)

**Material of Construction**

**Body&Cap&Bolt** :SS304 / SS316 / SS316L / Carbon Steel(WCB with RAL 3020)

**Sealing Gaskets** :PTFE(White) / NBR(Black) / Viton(Black) / Graphite(Black)

**Sight Glass** :Tempered / Borosilicate / Quartz / Aluminosilicate Glass

**Impeller/Rotor** :Plastic (Red) or PTFE (Red or Blue)

**Connection Method** :ANSI 150LB / 300LB,JIS 5K / 10K,DIN,GB Flange

**Max.Working Temp** :100°C / 212°F for Plastic Impeller&NBR / Viton Gasket  
 200°C / 392°F for PTFE Impeller&Gasket

**Max.Operating Pressure** :1.6MPa / 16Bar Tempered Glass (Up to 5.0MPa Customization)

**Applicable Medium** :Water / Oil / Gas / Air / Liquids Etc



Wenzhou Luosimeng Machinery Co.Ltd.

Wenzhou Luosimeng Machinery Co.Ltd.



Wenzhou Luosimeng Machinery Co.Ltd.

Wenzhou Luosimeng Machinery Co.Ltd.

**Product Model** : [SG-YL41-205](#)  
**Product Sizes** : DN15 to DN100(1/2”Inch to 4”Inch)  
**Material of Construction**  
**Body&Cap&Bolt** : SS304 / SS316 / SS316L / Carbon Steel(WCB)  
**Sealing Gaskets** : PTFE(White) / NBR(Black) / Viton(Black) / Graphite(Black)  
**Sight Glass** : Tempered / Borosilicate / Quartz / Aluminosilicate Glass  
**Impeller/Rotor** : Plastic (Red) or PTFE (Red or Blue)  
**Connection Method** : ANSI 150LB / 300LB, JIS 5K / 10K, DIN, GB Flange  
**Max.Working Temp** : 100°C / 212°F for Plastic Impeller&NBR / Viton Gasket  
 200°C / 392°F for PTFE Impeller&Gasket  
**Max.Operating Pressure** : 1.6MPa / 16Bar Tempered Glass (Up to 5.0MPa Customization)  
**Applicable Medium** : Water / Oil / Gas / Air / Liquids Etc



DN15 to DN65 Product Shape



DN80 & DN100 Product Shape

**Product Model** : [SG-YL41-205](#)  
**Product Sizes** : DN125 to DN500(2 1/2”Inch to 20”Inch)  
**Material of Construction**  
**Body&Cap&Bolt** : SS304 / SS316 / SS316L / Carbon Steel(WCB)  
**Sealing Gaskets** : PTFE(White) / NBR(Black) / Viton(Black) / Graphite(Black)  
**Sight Glass** : Tempered / Borosilicate / Quartz / Aluminosilicate Glass  
**Impeller/Rotor** : Plastic (Red) or PTFE (Red or Blue)  
**Connection Method** : ANSI 150LB / 300LB, JIS 5K / 10K, DIN, GB Flange  
**Max.Working Temp** : 100°C / 212°F for Plastic Impeller&NBR / Viton Gasket  
 200°C / 392°F for PTFE Impeller&Gasket  
**Max.Operating Pressure** : 1.6MPa / 16Bar Tempered Glass (Up to 2.5MPa Customization)  
**Applicable Medium** : Water / Oil / Gas / Air / Liquids Etc



Wenzhou Luosimeng Machinery Co.Ltd.

Wenzhou Luosimeng Machinery Co.Ltd.



Wenzhou Luosimeng Machinery Co.Ltd.

Wenzhou Luosimeng Machinery Co.Ltd.

**Product Model** : [SG-YL41-10](#)  
**Product Sizes** : DN15 to DN150(1/2”Inch to 6”Inch)  
**Material of Construction**  
**Body&Cap** : SS304 / SS316 / SS316L / Carbon Steel(WCB)  
**Sealing Gaskets** : PTFE(White) / NBR(Black) / Viton(Black) / Graphite(Black)  
**Sight Glass** : Tempered / Borosilicate / Quartz / Aluminosilicate Glass  
**Impeller/Rotor** : Plastic (Red) or PTFE (Red or Blue)  
**Connection Method** : ANSI 150LB / 300LB, JIS 5K / 10K, DIN, GB Flange  
**Max.Working Temp** : 100°C / 212°F for Plastic Impeller&NBR / Viton Gasket  
 200°C / 392°F for PTFE Impeller&Gasket  
**Max.Operating Pressure** : 1.6MPa / 16Bar Tempered Glass (Up to 5.0MPa Customization)  
**Applicable Medium** : Water / Oil / Gas / Air / Liquids Etc



Wenzhou Luosimeng Machinery Co.Ltd.

Wenzhou Luosimeng Machinery Co.Ltd.



Wenzhou Luosimeng Machinery Co.Ltd.

Wenzhou Luosimeng Machinery Co.Ltd.

**Product Model** : [SG-YL41-10](#)  
**Product Sizes** : DN200 to DN500(8”Inch to 20”Inch)  
**Material of Construction**  
**Body&Cap** : SS304 / SS316 / SS316L / Carbon Steel(WCB)  
**Sealing Gaskets** : PTFE(White) / NBR(Black) / Viton(Black) / Graphite(Black)  
**Sight Glass** : Tempered / Borosilicate / Quartz / Aluminosilicate Glass  
**Impeller/Rotor** : Plastic (Red) or PTFE (Red or Blue)  
**Connection Method** : ANSI 150LB / 300LB, JIS 5K / 10K, DIN, GB Flange  
**Max.Working Temp** : 100°C / 212°F for Plastic Impeller&NBR / Viton Gasket  
 200°C / 392°F for PTFE Impeller&Gasket  
**Max.Operating Pressure** : 1.6MPa / 16Bar Tempered Glass (Up to 5.0MPa Customization)  
**Applicable Medium** : Water / Oil / Gas / Air / Liquids Etc

**LSMSFI**



Wenzhou Luosimeng Machinery Co.Ltd.

**LSMSFI**



Wenzhou Luosimeng Machinery Co.Ltd.

**LSMSFI**



Wenzhou Luosimeng Machinery Co.Ltd.

**LSMSFI**



Wenzhou Luosimeng Machinery Co.Ltd.

**Product Model** : [SG-YL11-1](#)  
**Product Sizes** : DN6 to DN50(1/8”Inch to 2”Inch)  
**Material of Construction**  
**Body&Cap** : SS304 / SS316 / SS316L / Carbon Steel(WCB)  
**Sealing Gaskets** : PTFE(White) / NBR(Black) / Viton(Black) / Graphite(Black)  
**Sight Glass** : Tempered / Borosilicate / Quartz / Aluminosilicate Glass  
**Impeller/Rotor** : Plastic (Red) or PTFE (Red or Blue)  
**Connection Method** : NPT,BSPT,BSPP Female Thread(Screw)  
**Max.Working Temp** : 100°C / 212°F for Plastic Impeller&NBR / Viton Gasket  
 200°C / 392°F for PTFE Impeller&Gasket  
**Max.Operating Pressure** : 1.6MPa / 16Bar Tempered Glass (Up to 5.0MPa Customization)  
**Applicable Medium** : Water / Oil / Gas / Air / Liquids Etc

**LSMSFI**



Wenzhou Luosimeng Machinery Co.Ltd.

**LSMSFI**



Wenzhou Luosimeng Machinery Co.Ltd.

**LSMSFI**



Wenzhou Luosimeng Machinery Co.Ltd.

**LSMSFI**



Wenzhou Luosimeng Machinery Co.Ltd.

**Product Model** : [SG-YL11-20](#)  
**Product Sizes** : DN6 to DN50(1/8”Inch to 2”Inch)  
**Material of Construction**  
**Body&Cap** : SS304 / SS316 / SS316L / Carbon Steel(WCB)  
**Sealing Gaskets** : PTFE(White) / NBR(Black) / Viton(Black) / Graphite(Black)  
**Sight Glass** : Tempered / Borosilicate / Quartz / Aluminosilicate Glass  
**Impeller/Rotor** : Plastic (Red) or PTFE (Red or Blue)  
**Connection Method** : NPT,BSPT,BSPP Female Thread(Screw)  
**Max.Working Temp** : 100°C / 212°F for Plastic Impeller&NBR / Viton Gasket  
 200°C / 392°F for PTFE Impeller&Gasket  
**Max.Operating Pressure** : 1.6MPa / 16Bar Tempered Glass (Up to 5.0MPa Customization)  
**Applicable Medium** : Water / Oil / Gas / Air / Liquids Etc



Wenzhou Luosimeng Machinery Co.Ltd.

Wenzhou Luosimeng Machinery Co.Ltd.



Wenzhou Luosimeng Machinery Co.Ltd.

Wenzhou Luosimeng Machinery Co.Ltd.

**Product Model** : [SG-YL11-206](#)  
**Product Sizes** : DN8 to DN50(1/4”Inch to 2”Inch)  
**Material of Construction**  
**Body&Cap&Bolt** : SS304 / SS316 / SS316L / Carbon Steel(WCB)  
**Sealing Gaskets** : PTFE(White) / NBR(Black) / Viton(Black) / Graphite(Black)  
**Sight Glass** : Tempered / Borosilicate / Quartz / Aluminosilicate Glass  
**Impeller/Rotor** : Plastic (Red) or PTFE (Red or Blue)  
**Connection Method** : NPT,BSPT,BSPP Female Thread(Screw)  
**Max.Working Temp** : 100°C / 212°F for Plastic Impeller&NBR / Viton Gasket  
 200°C / 392°F for PTFE Impeller&Gasket  
**Max.Operating Pressure** : 1.6MPa / 16Bar Tempered Glass (Up to 5.0MPa Customization)  
**Applicable Medium** : Water / Oil / Gas / Air / Liquids Etc

**LSMSFI**



Wenzhou Luosimeng Machinery Co.Ltd.

**LSMSFI**



Wenzhou Luosimeng Machinery Co.Ltd.

**LSMSFI**



Wenzhou Luosimeng Machinery Co.Ltd.

**LSMSFI**



Wenzhou Luosimeng Machinery Co.Ltd.

**Product Model** : [SG-YL11-20N](#)  
**Product Sizes** : DN6 to DN50(1/8”Inch to 2”Inch)  
**Material of Construction**  
**Body&Cap** : SS304 / SS316 / SS316L / Carbon Steel(WCB)  
**Sealing Gaskets** : PTFE(White) / NBR(Black) / Viton(Black) / Graphite(Black)  
**Sight Glass** : Tempered / Borosilicate / Quartz / Aluminosilicate Glass  
**Impeller/Rotor** : Plastic (Red) or PTFE (Red or Blue)  
**Connection Method** : NPT,BSPT,BSPP Female Thread(Screw)  
**Max.Working Temp** : 100°C / 212°F for Plastic Impeller&NBR / Viton Gasket  
 200°C / 392°F for PTFE Impeller&Gasket  
**Max.Operating Pressure** : 1.6MPa / 16Bar Tempered Glass (Up to 5.0MPa Customization)  
**Applicable Medium** : Water / Oil / Gas / Air / Liquids Etc



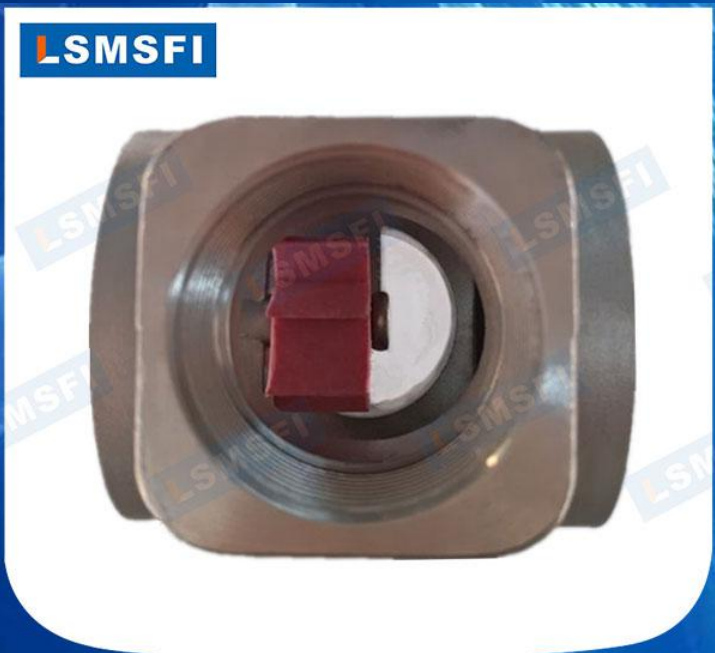
Wenzhou Luosimeng Machinery Co.Ltd.



Wenzhou Luosimeng Machinery Co.Ltd.



Wenzhou Luosimeng Machinery Co.Ltd.



Wenzhou Luosimeng Machinery Co.Ltd.

**Product Model** : [SG-YL61-20](#)  
**Product Sizes** : DN6 to DN100(1/8”Inch to 4”Inch)  
**Material of Construction**  
**Body&Cap** : SS304 / SS316 / SS316L / Carbon Steel(WCB)  
**Sealing Gaskets** : PTFE(White) / NBR(Black) / Viton(Black) / Graphite(Black)  
**Sight Glass** : Tempered / Borosilicate / Quartz / Aluminosilicate Glass  
**Impeller/Rotor** : Plastic (Red) or PTFE (Red or Blue)  
**Connection Method** : Butt Weld / Socket Weld  
**Max.Working Temp** : 100°C / 212°F for Plastic Impeller&NBR / Viton Gasket  
 200°C / 392°F for PTFE Impeller&Gasket  
**Max.Operating Pressure** : 1.6MPa / 16Bar Tempered Glass (Up to 5.0MPa Customization)  
**Applicable Medium** : Water / Oil / Gas / Air / Liquids Etc



**Product Model** : [SG-YL11-8A](#)  
**Product Sizes** : DN6 to DN50(1/8”Inch to 2”Inch)  
**Material of Construction**  
**Body&Cap** : SS304 / SS316 / SS316L / Carbon Steel(WCB)  
**Sealing Gaskets** : PTFE(White) / NBR(Black) / Viton(Black) / Graphite(Black)  
**Sight Glass** : Tempered / Borosilicate / Quartz / Aluminosilicate Glass  
**Impeller/Rotor** : Plastic (Red) or PTFE (Red or Blue)  
**Connection Method** : NPT,BSPT,BSPP Male Thread  
**Max.Working Temp** : 100°C / 212°F for Plastic Impeller&NBR / Viton Gasket  
 200°C / 392°F for PTFE Impeller&Gasket  
**Max.Operating Pressure** : 1.6MPa / 16Bar Tempered Glass (Up to 5.0MPa Customization)  
**Applicable Medium** : Water / Oil / Gas / Air / Liquids Etc



Wenzhou Luosimeng Machinery Co.Ltd.

Wenzhou Luosimeng Machinery Co.Ltd.



Wenzhou Luosimeng Machinery Co.Ltd.

Wenzhou Luosimeng Machinery Co.Ltd.

**Product Model** : [SG-YL61-1](#)  
**Product Sizes** : DN6 to DN50(1/8”Inch to 2”Inch)  
**Material of Construction**  
    **Body&Cap** : SS304 / SS316 / SS316L / Carbon Steel(WCB)  
    **Sealing Gaskets** : PTFE(White) / NBR(Black) / Viton(Black) / Graphite(Black)  
    **Sight Glass** : Tempered / Borosilicate / Quartz / Aluminosilicate Glass  
    **Impeller/Rotor** : Plastic (Red) or PTFE (Red or Blue)  
**Connection Method** : Butt Weld / Socket Weld  
**Max.Working Temp** : 100°C / 212°F for Plastic Impeller&NBR / Viton Gasket  
    200°C / 392°F for PTFE Impeller&Gasket  
**Max.Operating Pressure** : 1.6MPa / 16Bar Tempered Glass (Up to 5.0MPa Customization)  
**Applicable Medium** : Water / Oil / Gas / Air / Liquids Etc



Customized WCB with Paint Protection

**Product Model** : [SG-YL61-206](#)  
**Product Sizes** : DN8 to DN50(1/4”Inch to 2”Inch)  
**Material of Construction**  
**Body&Cap&Bolt** : SS304 / SS316 / SS316L / Carbon Steel(WCB)  
**Sealing Gaskets** : PTFE(White) / NBR(Black) / Viton(Black) / Graphite(Black)  
**Sight Glass** : Tempered / Borosilicate / Quartz / Aluminosilicate Glass  
**Impeller/Rotor** : Plastic (Red) or PTFE (Red or Blue)  
**Connection Method** : Butt Weld / Socket Weld  
**Max.Working Temp** : 100°C / 212°F for Plastic Impeller&NBR / Viton Gasket  
 200°C / 392°F for PTFE Impeller&Gasket  
**Max.Operating Pressure** : 1.6MPa / 16Bar Tempered Glass (Up to 5.0MPa Customization)  
**Applicable Medium** : Water / Oil / Gas / Air / Liquids Etc



Wenzhou Luosimeng Machinery Co.Ltd.



Wenzhou Luosimeng Machinery Co.Ltd.



Wenzhou Luosimeng Machinery Co.Ltd.



Wenzhou Luosimeng Machinery Co.Ltd.

WCB Customized Length with Metal Paint

**Product Model** : [SG-YL11-81](#)  
**Product Sizes** : DN8 to DN50(1/4”Inch to 2”Inch)  
**Material of Construction**  
**Body&Cap&Bolt** : SS304 / SS316 / SS316L / Carbon Steel(WCB)  
**Sealing Gaskets** : PTFE(White) / NBR(Black) / Viton(Black) / Graphite(Black)  
**Sight Glass** : Tempered / Borosilicate / Quartz / Aluminosilicate Glass  
**Impeller/Rotor** : Plastic (Red) or PTFE (Red or Blue)  
**Connection Method** : NPT,BSPT,BSPP Female Thread(Screw)  
**Max.Working Temp** : 100°C / 212°F for Plastic Impeller&NBR / Viton Gasket  
 200°C / 392°F for PTFE Impeller&Gasket  
**Max.Operating Pressure** : 1.6MPa / 16Bar Tempered Glass (Up to 5.0MPa Customization)  
**Applicable Medium** : Water / Oil / Gas / Air / Liquids Etc



Customized WCB with Paint Protection



Polish Food Grade Stainless Steel

**Product Model** : [SG-YL11-057F](#)  
**Product Sizes** : DN15 to DN50(1/2”Inch to 2”Inch)  
**Material of Construction**  
**Body&Cap&Link**: SS304 / SS316 / SS316L / Carbon Steel(WCB)  
**Sealing Gaskets** : PTFE(Green) / NBR(Black) / Viton(Black) / Graphite(Black)  
**Sight Glass** : Tempered / Quartz Glass  
**Impeller/Rotor** : Plastic (Red) or PTFE (Red or Blue)  
**Connection Method** : NPT,BSPT,BSPP Female Thread(Screw)  
**Max.Working Temp** : 100°C / 212°F for Plastic Impeller&NBR / Viton Gasket  
 200°C / 392°F for PTFE Impeller&Gasket  
**Max.Operating Pressure** : 0.6MPa / 6Bar Tempered Glass (Up to 1.6MPa Customization)  
**Applicable Medium** : Water / Oil / Gas / Air / Liquids Etc



Wenzhou Luosimeng Machinery Co.Ltd.



Wenzhou Luosimeng Machinery Co.Ltd.



Wenzhou Luosimeng Machinery Co.Ltd.



Wenzhou Luosimeng Machinery Co.Ltd.

**Product Model** : [SG-YL11-057](#)  
**Product Sizes** : DN6 to DN50(1/8”Inch to 2”Inch)  
**Material of Construction**  
**Body&Cap&Link**: SS304 / SS316 / SS316L / Carbon Steel(WCB)  
**Sealing Gaskets** : PTFE(Green) / NBR(Black) / Viton(Black)  
**Sight Glass** : Tempered / Quartz Glass  
**Impeller/Rotor** : Plastic (Red) or PTFE (Red or Blue)  
**Connection Method** : NPT,BSPT,BSPP Female Thread(Screw)  
**Max.Working Temp** : 100°C / 212°F for Plastic Impeller&NBR / Viton Gasket  
 200°C / 392°F for PTFE Impeller&Gasket  
**Max.Operating Pressure** : 0.6MPa / 6Bar Tempered Glass (Up to 1.6MPa Customization)  
**Applicable Medium** : Water / Oil / Gas / Air / Liquids Etc



Wenzhou Luosimeng Machinery Co.Ltd.

Wenzhou Luosimeng Machinery Co.Ltd.



Wenzhou Luosimeng Machinery Co.Ltd.

Wenzhou Luosimeng Machinery Co.Ltd.

**Product Model** : [SG-YL41-06](#)  
**Product Sizes** : DN6 to DN65(1/8”Inch to 2 1/2”Inch)  
**Material of Construction**  
**Body&Cap&Link**: SS304 / SS316 / SS316L / Carbon Steel(WCB)  
**Sealing Gaskets** : PTFE(White) / NBR(Black) / Viton(Black) / Graphite(Black)  
**Sight Glass** : Tempered / Borosilicate / Quartz / Aluminosilicate Glass  
**Impeller/Rotor** : Plastic (Red) or PTFE (Red or Blue)  
**Connection Method** : NPT,BSPT,BSPP Female Thread(Screw)  
**Max.Working Temp** : 100°C / 212°F for Plastic Impeller&NBR / Viton Gasket  
 200°C / 392°F for PTFE Impeller&Gasket  
**Max.Operating Pressure** : 1.6MPa / 16Bar Tempered Glass (Up to 5.0MPa Customization)  
**Applicable Medium** : Water / Oil / Gas / Air / Liquids Etc



Wenzhou Luosimeng Machinery Co.Ltd.

Wenzhou Luosimeng Machinery Co.Ltd.



Wenzhou Luosimeng Machinery Co.Ltd.

Wenzhou Luosimeng Machinery Co.Ltd.

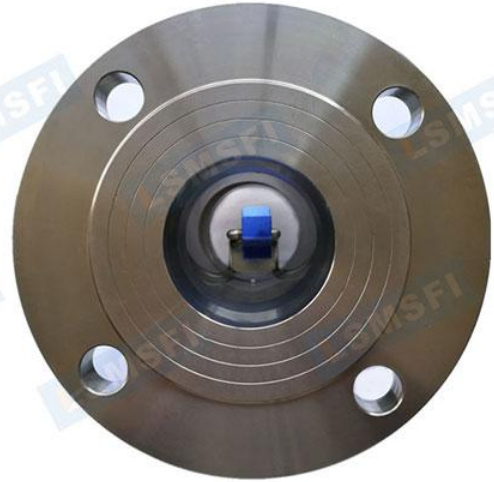
**Product Model** : [SG-YL11-077S](#)  
**Product Sizes** : DN65 to DN200(2 1/2”Inch to 8”Inch)  
**Material of Construction**  
**Body&Cap&Link**: SS304 / SS316 / SS316L / Carbon Steel(WCB)  
**Sealing Gaskets** : PTFE(Green) / NBR(Black) / Viton(Black)  
**Sight Glass** : Tempered / Quartz Glass  
**Impeller/Rotor** : Plastic (Red) or PTFE (Red or Blue)  
**Connection Method** : ANSI 150LB / 300LB, JIS 5K / 10K, DIN, GB Flange  
**Max.Working Temp** : 100°C / 212°F for Plastic Impeller&NBR / Viton Gasket  
 200°C / 392°F for PTFE Impeller&Gasket  
**Max.Operating Pressure** : 0.6MPa / 6Bar Tempered Glass (Up to 1.6MPa Customization)  
**Applicable Medium** : Water / Oil / Gas / Air / Liquids Etc

**LSMSFI**



Wenzhou Luosimeng Machinery Co.Ltd.

**LSMSFI**



Wenzhou Luosimeng Machinery Co.Ltd.

**LSMSFI**



Wenzhou Luosimeng Machinery Co.Ltd.

**LSMSFI**



Wenzhou Luosimeng Machinery Co.Ltd.

**Product Model** : [SG-YL41-83](#)  
**Product Sizes** : DN15 to DN100(1/2”Inch to 4”Inch)  
**Material of Construction**  
**Body&Cap&Bolt** : SS304 / SS316 / SS316L / Carbon Steel(WCB)  
**Sealing Gaskets** : PTFE(White) / NBR(Black) / Viton(Black) / Graphite(Black)  
**Sight Glass** : Tempered / Borosilicate / Quartz / Aluminosilicate Glass  
**Impeller/Rotor** : Plastic (Red) or PTFE (Red or Blue)  
**Connection Method** : ANSI 150LB / 300LB, JIS 5K / 10K, DIN, GB Flange  
**Max.Working Temp** : 100°C / 212°F for Plastic Impeller&NBR / Viton Gasket  
 200°C / 392°F for PTFE Impeller&Gasket  
**Max.Operating Pressure** : 1.6MPa / 16Bar Tempered Glass (Up to 5.0MPa Customization)  
**Applicable Medium** : Water / Oil / Gas / Air / Liquids Etc



Wenzhou Luosimeng Machinery Co.Ltd.

Wenzhou Luosimeng Machinery Co.Ltd.



Wenzhou Luosimeng Machinery Co.Ltd.

Wenzhou Luosimeng Machinery Co.Ltd.

**Product Model** : [SG-YL11-05](#)  
**Product Sizes** : DN6 to DN50(1/8”Inch to 2”Inch)  
**Material of Construction**  
**Body&Cap** : SS304 / SS316 / SS316L / Carbon Steel(WCB) / Brass  
**Sealing Gaskets** : PTFE(Green) / NBR(Black) / Viton(Black)  
**Sight Glass** : Tempered / Quartz Glass  
**Impeller/Rotor** : Plastic (Red) or PTFE (Red or Blue)  
**Connection Method** : NPT,BSPT,BSPP Female Thread(Screw)  
**Max.Working Temp** : 100°C / 212°F for Plastic Impeller&NBR / Viton Gasket  
 200°C / 392°F for PTFE Impeller&Gasket  
**Max.Operating Pressure** : 0.6MPa / 6Bar Tempered Glass (Up to 1.6MPa Customization)  
**Applicable Medium** : Water / Oil / Gas / Air / Liquids Etc



1/8”Inch to 3/8”Inch Shape



1/2”Inch to 1”Inch Shape



1 1/4”Inch to 2”Inch Shape



1/2”Inch to 1”Inch Shape

**Product Model** : [SG-YL11-05](#)  
**Product Sizes** : DN15 to DN50(1/2”Inch to 2”Inch)  
**Material of Construction**  
**Body&Cap** : SS304 / SS316 / SS316L / Carbon Steel(WCB) / Brass  
**Sealing Gaskets** : PTFE(Green) / NBR(Black) / Viton(Black)  
**Wiper/Cleaner** : PTFE(Green)/NBR(Black)  
**Sight Glass** : Tempered / Quartz Glass  
**Impeller/Rotor** : Plastic (Red) or PTFE (Red or Blue)  
**Connection Method** : NPT,BSPT,BSPP Female Thread(Screw)  
**Max.Working Temp** : 100°C / 212°F for Plastic Impeller&NBR / Viton Gasket  
 200°C / 392°F for PTFE Impeller&Gasket&Wiper  
**Max.Operating Pressure** : 0.6MPa / 6Bar Tempered Glass (Up to 1.6MPa Customization)  
**Applicable Medium** : Water / Oil / Gas / Air / Liquids Etc

**LSMSFI**



Wenzhou Luosimeng Machinery Co.Ltd.

**LSMSFI**



Wenzhou Luosimeng Machinery Co.Ltd.

**LSMSFI**



Wenzhou Luosimeng Machinery Co.Ltd.

**LSMSFI**



Wenzhou Luosimeng Machinery Co.Ltd.

**Product Model** : [SG-YL11-052A](#)  
**Product Sizes** : DN15 to DN50(1/2”Inch to 2”Inch)  
**Material of Construction**  
**Body&Cap** : SS304 / SS316 / SS316L / Carbon Steel(WCB) / Brass  
**Sealing Gaskets** : PTFE(Green) / NBR(Black) / Viton(Black)  
**Wiper/Cleaner** : PTFE(Green)/NBR(Black)  
**Sight Glass** : Tempered / Quartz Glass  
**Impeller/Rotor** : Plastic (Red) or PTFE (Red or Blue)  
**Connection Method** : NPT,BSPT,BSPP Male Thread  
**Max.Working Temp** : 100°C / 212°F for Plastic Impeller&NBR / Viton Gasket  
 200°C / 392°F for PTFE Impeller&Gasket&Wiper  
**Max.Operating Pressure** : 0.6MPa / 6Bar Tempered Glass (Up to 1.6MPa Customization)  
**Applicable Medium** : Water / Oil / Gas / Air / Liquids Etc



Wenzhou Luosimeng Machinery Co.Ltd.



Wenzhou Luosimeng Machinery Co.Ltd.



Wenzhou Luosimeng Machinery Co.Ltd.



Wenzhou Luosimeng Machinery Co.Ltd.

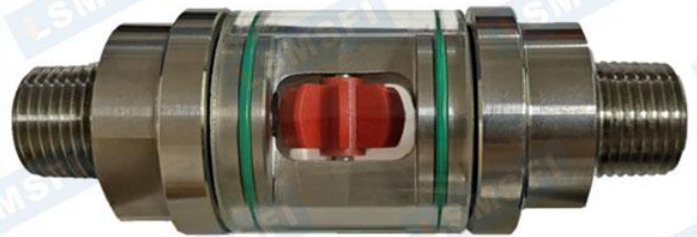
<b>Product Model</b>	: <a href="#">SG-YL11-052</a>
<b>Product Sizes</b>	: DN15 to DN50(1/2”Inch to 2”Inch)
<b>Material of Construction</b>	
<b>Body&amp;Cap</b>	: SS304 / SS316 / SS316L / Carbon Steel(WCB) / Brass
<b>Sealing Gaskets</b>	: PTFE(Green) / NBR(Black) / Viton(Black)
<b>Wiper/Cleaner</b>	: PTFE(Green)/NBR(Black)
<b>Sight Glass</b>	: Tempered / Quartz Glass
<b>Impeller/Rotor</b>	: Plastic (Red) or PTFE (Red or Blue)
<b>Connection Method</b>	: NPT,BSPT,BSPP Male Thread
<b>Max.Working Temp</b>	: 100°C / 212°F for Plastic Impeller&NBR / Viton Gasket 200°C / 392°F for PTFE Impeller&Gasket&Wiper
<b>Max.Operating Pressure</b>	: 0.6MPa / 6Bar Tempered Glass (Up to 1.6MPa Customization)
<b>Applicable Medium</b>	: Water / Oil / Gas / Air / Liquids Etc

**LSMSFI**



Wenzhou Luosimeng Machinery Co.Ltd.

**LSMSFI**



Wenzhou Luosimeng Machinery Co.Ltd.

**LSMSFI**



Wenzhou Luosimeng Machinery Co.Ltd.

**LSMSFI**



Wenzhou Luosimeng Machinery Co.Ltd.

**Product Model** : [SG-YL11-03](#)  
**Product Sizes** : DN6 to DN25(1/8”Inch to 1”Inch)  
**Material of Construction**  
**Body&Cap** : SS304 / SS316 / SS316L / Brass  
**Sealing Gaskets** : PTFE(Green) / NBR(Black) / Viton(Black)  
**Sight Glass** : Tempered Glass  
**Impeller/Rotor** : Plastic (Red or White) or PTFE (Red or Blue)  
**Connection Method** : NPT,BSPT,BSPP Female Thread(Screw)  
**Max.Working Temp** : 100°C / 212°F for Plastic Impeller&NBR / Viton Gasket  
 200°C / 392°F for PTFE Impeller&Gasket&Wiper  
**Max.Operating Pressure** : 0.6MPa / 6Bar Tempered Glass  
**Applicable Medium** : Water / Oil / Gas / Air / Liquids Etc

**LSMSFI**



Wenzhou Luosimeng Machinery Co.Ltd.

**LSMSFI**



Wenzhou Luosimeng Machinery Co.Ltd.

**LSMSFI**



Wenzhou Luosimeng Machinery Co.Ltd.

**LSMSFI**



Wenzhou Luosimeng Machinery Co.Ltd.

**Product Model** : [SG-YL11-03A](#)  
**Product Sizes** : DN6 to DN25(1/8”Inch to 1”Inch)  
**Material of Construction**  
    **Body&Cap** : SS304 / SS316 / SS316L  
    **Sealing Gaskets** : PTFE(Green) / NBR(Black) / Viton(Black)  
    **Sight Glass** : Tempered Glass  
    **Impeller/Rotor** : Plastic (Red or White) or PTFE (Red or Blue)  
**Connection Method** : NPT,BSPT,BSPP Male Thread  
**Max.Working Temp** : 100°C / 212°F for Plastic Impeller&NBR / Viton Gasket  
    200°C / 392°F for PTFE Impeller&Gasket&Wiper  
**Max.Operating Pressure** : 0.6MPa / 6Bar Tempered Glass  
**Applicable Medium** : Water / Oil / Gas / Air / Liquids Etc



SG-YL11-03A



Type A Male Thread



SG-YL11-03B



Type B Male Thread

**Product Model** : [SG-YL11-85](#)  
**Product Sizes** : DN8 to DN50(1/4”Inch to 2”Inch)  
**Material of Construction**  
**Body&Cap&Bolt** : SS304 / SS316 / SS316L / Carbon Steel(WCB)  
**Sealing Gaskets** : PTFE(White) / NBR(Black) / Viton(Black) / Graphite(Black)  
**Sight Glass** : Tempered / Borosilicate / Quartz / Aluminosilicate Glass  
**Impeller/Rotor** : Plastic (Red) or PTFE (Red or Blue)  
**Connection Method** : NPT,BSPT,BSPP Female Thread(Screw) or Socket Weld  
**Max.Working Temp** : 100°C / 212°F for Plastic Impeller&NBR / Viton Gasket  
 200°C / 392°F for PTFE Impeller&Gasket  
**Max.Operating Pressure** : 1.6MPa / 16Bar Tempered Glass (Up to 5.0MPa Customization)  
**Applicable Medium** : Water / Oil / Gas / Air / Liquids Etc



SG-YL11-85 with Female Thread



SG-YL61-86 with Socket Weld

**Product Model** : [SG-ZT41-206D](#)  
**Product Sizes** : DN15 to DN100(1/2”Inch to 4”Inch)  
**Material of Construction**  
**Body&Cap&Bolt** : SS304 / SS316 / SS316L / Carbon Steel(WCB)  
**Sealing Gaskets** : PTFE(White) / NBR(Black) / Viton(Black) / Graphite(Black)  
**Sight Glass** : Tempered / Borosilicate / Quartz / Aluminosilicate Glass  
**Connection Method** : ANSI 150LB / 300LB, JIS 5K / 10K, DIN, GB Flange  
**Max.Working Temp** : 100°C / 212°F for NBR / Viton Gasket  
 200°C / 392°F for PTFE Gasket  
**Max.Operating Pressure** : 1.6MPa / 16Bar Tempered Glass (Up to 5.0MPa Customization)  
**Applicable Medium** : Water / Oil / Gas / Air / Liquids Etc



1/2”Inch to 2”Inch Product Shape



2 1/2”Inch to 4”Inch Product Shape

**Product Model** : [SG-ZT41-206D](#)  
**Product Sizes** : DN15 to DN100(1/2”Inch to 4”Inch)  
**Material of Construction**  
**Body&Cap&Bolt** : SS304 / SS316 / SS316L / Carbon Steel(WCB)  
**Sealing Gaskets** : PTFE(White) / NBR(Black) / Viton(Black) / Graphite(Black)  
**Sight Glass** : Tempered / Borosilicate / Quartz / Aluminosilicate Glass  
**Metal Paint** : RAL 5005,RAL 3020,RAL 7040,Others Etc  
**Connection Method** : ANSI 150LB / 300LB,JIS 5K / 10K,DIN,GB Flange  
**Max.Working Temp** : 100°C / 212°F for NBR / Viton Gasket  
 200°C / 392°F for PTFE Gasket  
**Max.Operating Pressure** : 1.6MPa / 16Bar Tempered Glass (Up to 5.0MPa Customization)  
**Applicable Medium** : Water / Oil / Gas / Air / Liquids Etc



Wenzhou Luosimeng Machinery Co.Ltd.

Wenzhou Luosimeng Machinery Co.Ltd.



Wenzhou Luosimeng Machinery Co.Ltd.

Wenzhou Luosimeng Machinery Co.Ltd.

**Product Model** : [SG-ZT11-68](#)  
**Product Sizes** : DN6 to DN50(1/8”Inch to 2”Inch)  
**Material of Construction**  
**Body&Cap&Bolt** : SS304 / SS316 / SS316L / Carbon Steel(WCB)  
**Sealing Gaskets** : PTFE(White) / NBR(Black) / Viton(Black) / Graphite(Black)  
**Sight Glass** : Tempered / Borosilicate / Quartz / Aluminosilicate Glass  
**Connection Method** : NPT,BSPT,BSPP Female Thread(Screw)  
**Max.Working Temp** : 100°C / 212°F for NBR / Viton Gasket  
 200°C / 392°F for PTFE Gasket  
**Max.Operating Pressure** : 1.6MPa / 16Bar Tempered Glass (Up to 5.0MPa Customization)  
**Applicable Medium** : Water / Oil / Gas / Air / Liquids Etc

**LSMSFI**



Wenzhou Luosimeng Machinery Co.Ltd.

**LSMSFI**



Wenzhou Luosimeng Machinery Co.Ltd.

**LSMSFI**



Wenzhou Luosimeng Machinery Co.Ltd.

**LSMSFI**



Wenzhou Luosimeng Machinery Co.Ltd.

**Product Model** : [SG-ZT61-68](#)  
**Product Sizes** : DN6 to DN50(1/8" Inch to 2" Inch)  
**Material of Construction**  
**Body&Cap&Bolt** : SS304 / SS316 / SS316L / Carbon Steel(WCB)  
**Sealing Gaskets** : PTFE(White) / NBR(Black) / Viton(Black) / Graphite(Black)  
**Sight Glass** : Tempered / Borosilicate / Quartz / Aluminosilicate Glass  
**Connection Method** : Butt Weld / Socket Weld  
**Max.Working Temp** : 100°C / 212°F for NBR / Viton Gasket  
 200°C / 392°F for PTFE Gasket  
**Max.Operating Pressure** : 1.6MPa / 16Bar Tempered Glass (Up to 5.0MPa Customization)  
**Applicable Medium** : Water / Oil / Gas / Air / Liquids Etc

**LSMSFI**



Wenzhou Luosimeng Machinery Co.Ltd.

**LSMSFI**



Wenzhou Luosimeng Machinery Co.Ltd.

**LSMSFI**



Wenzhou Luosimeng Machinery Co.Ltd.

**LSMSFI**



Wenzhou Luosimeng Machinery Co.Ltd.

**Product Model** : [SG-ZT11-30D](#)  
**Product Sizes** : DN6 to DN50(1/8”Inch to 2”Inch)  
**Material of Construction**  
**Body&Cap** : SS304 / SS316 / SS316L / Carbon Steel(WCB)  
**Sealing Gaskets** : PTFE(White) / NBR(Black) / Viton(Black) / Graphite(Black)  
**Sight Glass** : Tempered / Borosilicate / Quartz / Aluminosilicate Glass  
**Connection Method** : NPT,BSPT,BSPP Female Thread(Screw)  
**Max.Working Temp** : 100°C / 212°F for NBR / Viton Gasket  
 200°C / 392°F for PTFE Gasket  
**Max.Operating Pressure** : 1.6MPa / 16Bar Tempered Glass (Up to 5.0MPa Customization)  
**Applicable Medium** : Water / Oil / Gas / Air / Liquids Etc



1/8”Inch to 1”Inch Product Shape



1 1/4”Inch to 2”Inch Product Shape

**Product Model** : [SG-ZT11-051D](#)  
**Product Sizes** : DN6 to DN50(1/8”Inch to 2”Inch)  
**Material of Construction**  
**Body&Cap** : SS304 / SS316 / SS316L / Carbon Steel(WCB)  
**Sealing Gaskets** : PTFE(White) / NBR(Black) / Viton(Black) / Graphite(Black)  
**Sight Glass** : Tempered / Quartz Glass  
**Connection Method** : NPT,BSPT,BSPP Female Thread(Screw)  
**Max.Working Temp** : 100°C / 212°F for NBR / Viton Gasket  
 200°C / 392°F for PTFE Gasket  
**Max.Operating Pressure** : 0.6MPa / 6Bar Tempered Glass (Up to 1.6MPa Customization)  
**Applicable Medium** : Water / Oil / Gas / Air / Liquids Etc

**LSMSFI**



Wenzhou Luosimeng Machinery Co.Ltd.

**LSMSFI**



Wenzhou Luosimeng Machinery Co.Ltd.

**LSMSFI**



Wenzhou Luosimeng Machinery Co.Ltd.

**LSMSFI**



Wenzhou Luosimeng Machinery Co.Ltd.

**Product Model** : [SG-ZT41-3L](#)  
**Product Sizes** : DN15 to DN500(1/2”Inch to 20”Inch)  
**Material of Construction**  
**Body&Cap&Bolt** : SS304 / SS316 / SS316L / Carbon Steel(WCB)  
**Sealing Gaskets** : PTFE(White) / NBR(Black) / Viton(Black) / Graphite(Black)  
**Sight Glass** : Tempered / Borosilicate / Quartz / Aluminosilicate Glass  
**Paint Material** : Common Anti-rust Paint and Blue Paint  
**Connection Method** : ANSI 150LB / 300LB, JIS 5K / 10K, DIN, GB Flange  
**Max.Working Temp** : 100°C / 212°F for NBR / Viton Gasket  
 200°C / 392°F for PTFE Gasket  
**Max.Operating Pressure** : 1.6MPa / 16Bar Tempered Glass (Up to 5.0MPa Customization)  
**Applicable Medium** : Water / Oil / Gas / Air / Liquids Etc



Wenzhou Luosimeng Machinery Co.Ltd.

Wenzhou Luosimeng Machinery Co.Ltd.

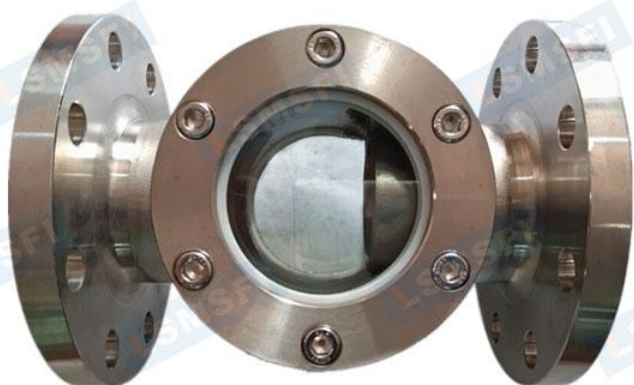


Wenzhou Luosimeng Machinery Co.Ltd.

Wenzhou Luosimeng Machinery Co.Ltd.

**Product Model** : [SG-ZT41-205D](#)  
**Product Sizes** : DN80 to DN100(3”Inch to 4”Inch)  
**Material of Construction**  
**Body&Cap&Bolt** : SS304 / SS316 / SS316L / Carbon Steel(WCB)  
**Sealing Gaskets** : PTFE(White) / NBR(Black) / Viton(Black) / Graphite(Black)  
**Sight Glass** : Tempered / Borosilicate / Quartz / Aluminosilicate Glass  
**Connection Method** : ANSI 150LB / 300LB, JIS 5K / 10K, DIN, GB Flange  
**Max.Working Temp** : 100°C / 212°F for NBR / Viton Gasket  
 200°C / 392°F for PTFE Gasket  
**Max.Operating Pressure** : 1.6MPa / 16Bar Tempered Glass (Up to 5.0MPa Customization)  
**Applicable Medium** : Water / Oil / Gas / Air / Liquids Etc

**LSMSFI**



Wenzhou Luosimeng Machinery Co.Ltd.

**LSMSFI**



Wenzhou Luosimeng Machinery Co.Ltd.

**LSMSFI**



Wenzhou Luosimeng Machinery Co.Ltd.

**LSMSFI**



Wenzhou Luosimeng Machinery Co.Ltd.

**Product Model** : [SG-ZT41-83D](#)  
**Product Sizes** : DN15 to DN500(1/2”Inch to 20”Inch)  
**Material of Construction**  
**Body&Cap&Bolt** : SS304 / SS316 / SS316L / Carbon Steel(WCB)  
**Sealing Gaskets** : PTFE(White) / NBR(Black) / Viton(Black) / Graphite(Black)  
**Sight Glass** : Tempered / Borosilicate / Quartz / Aluminosilicate Glass  
**Paint Material** : Common Anti-rust Paint and Blue Paint  
**Connection Method** : ANSI 150LB / 300LB, JIS 5K / 10K, DIN, GB Flange  
**Max.Working Temp** : 100°C / 212°F for NBR / Viton Gasket  
 200°C / 392°F for PTFE Gasket  
**Max.Operating Pressure** : 1.6MPa / 16Bar Tempered Glass (Up to 5.0MPa Customization)  
**Applicable Medium** : Water / Oil / Gas / Air / Liquids Etc



Wenzhou Luosimeng Machinery Co.Ltd.

Wenzhou Luosimeng Machinery Co.Ltd.



Wenzhou Luosimeng Machinery Co.Ltd.

Wenzhou Luosimeng Machinery Co.Ltd.

**Product Model** : [SG-ZT41-206](#)  
**Product Sizes** : DN15 to DN100(1/2”Inch to 4”Inch)  
**Material of Construction**  
**Body&Cap&Bolt** : SS304 / SS316 / SS316L / Carbon Steel(WCB)  
**Flapper&Spring** : SS304 / SS316 / SS316L  
**Sealing Gaskets** : PTFE(White) / NBR(Black) / Viton(Black) / Graphite(Black)  
**Sight Glass** : Tempered / Borosilicate / Quartz / Aluminosilicate Glass  
**Paint Material** : RAL 3020 or Others  
**Connection Method** : ANSI 150LB / 300LB, JIS 5K / 10K, DIN, GB Flange  
**Max.Working Temp** : 100°C / 212°F for NBR / Viton Gasket  
 200°C / 392°F for PTFE Gasket  
**Max.Operating Pressure** : 1.6MPa / 16Bar Tempered Glass (Up to 5.0MPa Customization)  
**Applicable Medium** : Water / Oil / Gas / Air / Liquids Etc



Wenzhou Luosimeng Machinery Co.Ltd.



Wenzhou Luosimeng Machinery Co.Ltd.



Wenzhou Luosimeng Machinery Co.Ltd.



Wenzhou Luosimeng Machinery Co.Ltd.

**Product Model** : [SG-ZT41-206](#)  
**Product Sizes** : DN15 to DN100(1/2”Inch to 4”Inch)  
**Material of Construction**  
**Body&Cap&Bolt** : SS304 / SS316 / SS316L / Carbon Steel(WCB)  
**Flapper&Spring** : SS304 / SS316 / SS316L  
**Sealing Gaskets** : PTFE(White) / NBR(Black) / Viton(Black) / Graphite(Black)  
**Sight Glass** : Tempered / Borosilicate / Quartz / Aluminosilicate Glass  
**Paint Material** : Common Anti-rust Paint and Blue Paint  
**Connection Method** : ANSI 150LB / 300LB, JIS 5K / 10K, DIN, GB Flange  
**Max.Working Temp** : 100°C / 212°F for NBR / Viton Gasket  
 200°C / 392°F for PTFE Gasket  
**Max.Operating Pressure** : 1.6MPa / 16Bar Tempered Glass (Up to 5.0MPa Customization)  
**Applicable Medium** : Water / Oil / Gas / Air / Liquids Etc



**LSMSFI**

Wenzhou Luosimeng Machinery Co.Ltd.



**LSMSFI**

Wenzhou Luosimeng Machinery Co.Ltd.



**LSMSFI**

Wenzhou Luosimeng Machinery Co.Ltd.



**LSMSFI**

Wenzhou Luosimeng Machinery Co.Ltd.

**Product Model** : [SG-ZT11-70](#)  
**Product Sizes** : DN6 to DN50(1/8”Inch to 2”Inch)  
**Material of Construction**  
**Body&Cap&Bolt** : SS304 / SS316 / SS316L / Carbon Steel(WCB)  
**Flapper&Spring** : SS304 / SS316 / SS316L  
**Sealing Gaskets** : PTFE(White) / NBR(Black) / Viton(Black) / Graphite(Black)  
**Sight Glass** : Tempered / Borosilicate / Quartz / Aluminosilicate Glass  
**Paint Material** : Common Anti-rust Paint and Blue Paint  
**Connection Method** : NPT,BSPT(RC),BSPP(G) Female Thread(Screw)  
**Max.Working Temp** : 100°C / 212°F for NBR / Viton Gasket  
 200°C / 392°F for PTFE Gasket  
**Max.Operating Pressure** : 1.6MPa / 16Bar Tempered Glass (Up to 5.0MPa Customization)  
**Applicable Medium** : Water / Oil / Gas / Air / Liquids Etc

**LSMSFI**



Wenzhou Luosimeng Machinery Co.Ltd.

**LSMSFI**



Wenzhou Luosimeng Machinery Co.Ltd.

**LSMSFI**



Wenzhou Luosimeng Machinery Co.Ltd.

**LSMSFI**



Wenzhou Luosimeng Machinery Co.Ltd.

**Product Model** : [SG-ZT11-70](#)  
**Product Sizes** : DN6 to DN50(1/8”Inch to 2”Inch)  
**Material of Construction**  
**Body&Cap&Bolt** : SS304 / SS316 / SS316L / Carbon Steel(WCB)  
**Flapper&Spring** : SS304 / SS316 / SS316L  
**Sealing Gaskets** : PTFE(White) / NBR(Black) / Viton(Black) / Graphite(Black)  
**Sight Glass** : Tempered / Borosilicate / Quartz / Aluminosilicate Glass  
**Paint Material** : Common Anti-rust Paint and Blue Paint  
**Connection Method** : NPT,BSPT(RC),BSPP(G) Female Thread(Screw)  
**Max.Working Temp** : 100°C / 212°F for NBR / Viton Gasket  
 200°C / 392°F for PTFE Gasket  
**Max.Operating Pressure** : 1.6MPa / 16Bar Tempered Glass (Up to 5.0MPa Customization)  
**Applicable Medium** : Water / Oil / Gas / Air / Liquids Etc



Wenzhou Luosimeng Machinery Co.Ltd.

Wenzhou Luosimeng Machinery Co.Ltd.



Wenzhou Luosimeng Machinery Co.Ltd.

Wenzhou Luosimeng Machinery Co.Ltd.

**Product Model** : [SG-ZT41-205](#)  
**Product Sizes** : DN15 to DN65(1/2”Inch to 2 1/2 ”Inch)  
**Material of Construction**  
**Body&Cap&Bolt** : SS304 / SS316 / SS316L / Carbon Steel(WCB)  
**Flapper&Spring** : SS304 / SS316 / SS316L  
**Sealing Gaskets** : PTFE(White) / NBR(Black) / Viton(Black) / Graphite(Black)  
**Sight Glass** : Tempered / Borosilicate / Quartz / Aluminosilicate Glass  
**Paint Material** : Common Anti-rust Paint and Blue Paint  
**Connection Method** : ANSI 150LB / 300LB, JIS 5K / 10K, DIN, GB Flange  
**Max.Working Temp** : 100°C / 212°F for NBR / Viton Gasket  
 200°C / 392°F for PTFE Gasket  
**Max.Operating Pressure** : 1.6MPa / 16Bar Tempered Glass (Up to 5.0MPa Customization)  
**Applicable Medium** : Water / Oil / Gas / Air / Liquids Etc



Wenzhou Luosimeng Machinery Co.Ltd.

Wenzhou Luosimeng Machinery Co.Ltd.



Wenzhou Luosimeng Machinery Co.Ltd.

Wenzhou Luosimeng Machinery Co.Ltd.

Carbon Steel with Paint Protection

**Product Model** : [SG-ZT41-205](#)  
**Product Sizes** : DN15 to DN500(1/2”Inch to 20”Inch)  
**Material of Construction**  
**Body&Cap&Bolt** : SS304 / SS316 / SS316L / Carbon Steel(WCB)  
**Flapper&Spring** : SS304 / SS316 / SS316L  
**Sealing Gaskets** : PTFE(White) / NBR(Black) / Viton(Black) / Graphite(Black)  
**Sight Glass** : Tempered / Borosilicate / Quartz / Aluminosilicate Glass  
**Connection Method** : ANSI 150LB / 300LB, JIS 5K / 10K, DIN, GB Flange  
**Max.Working Temp** : 100°C / 212°F for NBR / Viton Gasket  
 200°C / 392°F for PTFE Gasket  
**Max.Operating Pressure** : 1.6MPa / 16Bar Tempered Glass (Up to 5.0MPa Customization)  
**Applicable Medium** : Water / Oil / Gas / Air / Liquids Etc



DN15 to DN65 Product Shape



DN80 and DN100 Product Shape



DN125 to DN500 Product Shape

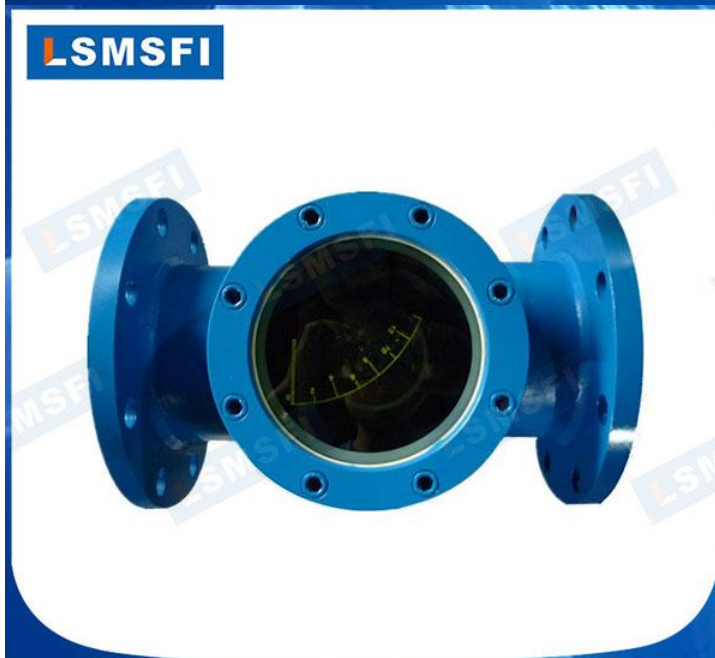


**Product Model** : [SG-ZT41-205](#)  
**Product Sizes** : DN80 to DN500(3”Inch to 20 ”Inch)  
**Material of Construction**  
**Body&Cap&Bolt** : SS304 / SS316 / SS316L / Carbon Steel(WCB)  
**Flapper&Spring** : SS304 / SS316 / SS316L  
**Sealing Gaskets** : PTFE(White) / NBR(Black) / Viton(Black) / Graphite(Black)  
**Sight Glass** : Tempered / Borosilicate / Quartz / Aluminosilicate Glass  
**Paint Material** : Common Anti-rust Paint and Blue Paint  
**Connection Method** : ANSI 150LB / 300LB, JIS 5K / 10K, DIN, GB Flange  
**Max.Working Temp** : 100°C / 212°F for NBR / Viton Gasket  
 200°C / 392°F for PTFE Gasket  
**Max.Operating Pressure** : 1.6MPa / 16Bar Tempered Glass (Up to 5.0MPa Customization)  
**Applicable Medium** : Water / Oil / Gas / Air / Liquids Etc



Wenzhou Luosimeng Machinery Co.Ltd.

Wenzhou Luosimeng Machinery Co.Ltd.



Wenzhou Luosimeng Machinery Co.Ltd.

Wenzhou Luosimeng Machinery Co.Ltd.

Carbon Steel with Paint Protection

**Product Model** : [SG-ZT41-202](#)  
**Product Sizes** : DN15 to DN50(1/2”Inch to 10”Inch)  
**Material of Construction**  
**Body&Cap&Bolt** : SS304 / SS316 / SS316L / Carbon Steel(WCB)  
**Flapper&Spring** : SS304 / SS316 / SS316L  
**Sealing Gaskets** : PTFE(White) / NBR(Black) / Viton(Black) / Graphite(Black)  
**Sight Glass** : Tempered / Borosilicate / Quartz / Aluminosilicate Glass  
**Paint Material** : Common Anti-rust Paint and Blue Paint  
**Connection Method** : ANSI 150LB / 300LB, JIS 5K / 10K, DIN, GB Flange  
**Max.Working Temp** : 100°C / 212°F for NBR / Viton Gasket  
 200°C / 392°F for PTFE Gasket  
**Max.Operating Pressure** : 1.6MPa / 16Bar Tempered Glass (Up to 5.0MPa Customization)  
**Applicable Medium** : Water / Oil / Gas / Air / Liquids Etc



Wenzhou Luosimeng Machinery Co.Ltd.

Wenzhou Luosimeng Machinery Co.Ltd.



Wenzhou Luosimeng Machinery Co.Ltd.

Wenzhou Luosimeng Machinery Co.Ltd.

Carbon Steel with Paint Protection

**Product Model** : [SG-ZT41-208](#)  
**Product Sizes** : DN15 to DN50(1/2”Inch to 10”Inch)  
**Material of Construction**  
**Body&Cap&Bolt** : SS304 / SS316 / SS316L / Carbon Steel(WCB)  
**Flapper&Spring** : SS304 / SS316 / SS316L  
**Sealing Gaskets** : PTFE(White) / NBR(Black) / Viton(Black) / Graphite(Black)  
**Sight Glass** : Tempered / Borosilicate / Quartz / Aluminosilicate Glass  
**Paint Material** : Common Anti-rust Paint and Blue Paint  
**Connection Method** : ANSI 150LB / 300LB, JIS 5K / 10K, DIN, GB Flange  
**Max.Working Temp** : 100°C / 212°F for NBR / Viton Gasket  
 200°C / 392°F for PTFE Gasket  
**Max.Operating Pressure** : 1.6MPa / 16Bar Tempered Glass (Up to 5.0MPa Customization)  
**Applicable Medium** : Water / Oil / Gas / Air / Liquids Etc



Wenzhou Luosimeng Machinery Co.Ltd.

Wenzhou Luosimeng Machinery Co.Ltd.



Wenzhou Luosimeng Machinery Co.Ltd.

Wenzhou Luosimeng Machinery Co.Ltd.

**Product Model** : [SG-ZT61-205](#)  
**Product Sizes** : DN80 to DN100(3”Inch to 4”Inch)  
**Material of Construction**  
**Body&Cap&Bolt** : SS304 / SS316 / SS316L / Carbon Steel(WCB)  
**Flapper&Spring** : SS304 / SS316 / SS316L  
**Sealing Gaskets** : PTFE(White) / NBR(Black) / Viton(Black) / Graphite(Black)  
**Sight Glass** : Tempered / Borosilicate / Quartz / Aluminosilicate Glass  
**Paint Material** : Common Anti-rust Paint and Blue Paint  
**Connection Method** : Socket Weld / Butt Weld  
**Max.Working Temp** : 100°C / 212°F for NBR / Viton Gasket  
 200°C / 392°F for PTFE Gasket  
**Max.Operating Pressure** : 1.6MPa / 16Bar Tempered Glass (Up to 5.0MPa Customization)  
**Applicable Medium** : Water / Oil / Gas / Air / Liquids Etc



**Product Model** : [SG-ZT11-30](#)  
**Product Sizes** : DN6 to DN65(1/8”Inch to 2 1/2”Inch)  
**Material of Construction**  
**Body&Cap** : SS304 / SS316 / SS316L / Carbon Steel(WCB)  
**Sealing Gaskets** : PTFE(White) / NBR(Black) / Viton(Black) / Graphite(Black)  
**Sight Glass** : Tempered / Borosilicate / Quartz / Aluminosilicate Glass  
**Connection Method** : NPT,BSPT,BSPP Female Thread(Screw)  
**Max.Working Temp** : 100°C / 212°F for NBR / Viton Gasket  
 200°C / 392°F for PTFE Gasket  
**Max.Operating Pressure** : 1.6MPa / 16Bar Tempered Glass (Up to 5.0MPa Customization)  
**Applicable Medium** : Water / Oil / Gas / Air / Liquids Etc



**Product Model** : [SG-ZT41-205P](#)  
**Product Sizes** : DN15 to DN65(1/2”Inch to 2 1/2”Inch)  
**Material of Construction**  
**Body&Cap** : SS304 / SS316 / SS316L / Carbon Steel(WCB)  
**Sealing Gaskets** : PTFE(White) / NBR(Black) / Viton(Black) / Graphite(Black)  
**Sight Glass** : Tempered / Borosilicate / Quartz / Aluminosilicate Glass  
**Connection Method** : ANSI 150LB / 300LB, JIS 5K / 10K, DIN, GB Flange  
**Max.Working Temp** : 100°C / 212°F for NBR / Viton Gasket  
 200°C / 392°F for PTFE Gasket  
**Max.Operating Pressure** : 1.6MPa / 16Bar Tempered Glass (Up to 5.0MPa Customization)  
**Applicable Medium** : Water / Oil / Gas / Air / Liquids Etc

**LSMSFI**



Wenzhou Luosimeng Machinery Co.Ltd.

**LSMSFI**



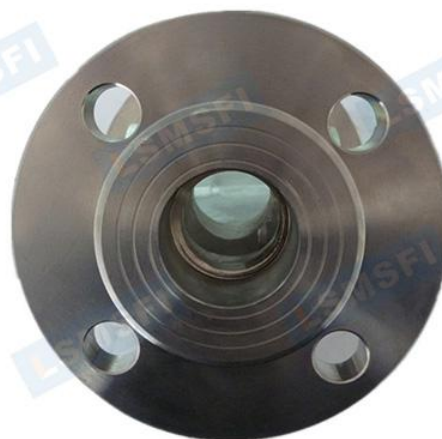
Wenzhou Luosimeng Machinery Co.Ltd.

**LSMSFI**



Wenzhou Luosimeng Machinery Co.Ltd.

**LSMSFI**



Wenzhou Luosimeng Machinery Co.Ltd.

**Product Model** : [SG-ZT11-1](#)  
**Product Sizes** : DN6 to DN50(1/8”Inch to 2”Inch)  
**Material of Construction**  
**Body&Cap** : SS304 / SS316 / SS316L / Carbon Steel(WCB)  
**Sealing Gaskets** : PTFE(White) / NBR(Black) / Viton(Black) / Graphite(Black)  
**Sight Glass** : Tempered / Borosilicate / Quartz / Aluminosilicate Glass  
**Connection Method** : NPT,BSPT,BSPP Female Thread(Screw)  
**Max.Working Temp** : 100°C / 212°F for NBR / Viton Gasket  
 200°C / 392°F for PTFE Gasket  
**Max.Operating Pressure** : 1.6MPa / 16Bar Tempered Glass (Up to 5.0MPa Customization)  
**Applicable Medium** : Water / Oil / Gas / Air / Liquids Etc



**Product Model** : [SG-ZT41-10](#)  
**Product Sizes** : DN15 to DN500(1/2”Inch to 20”Inch)  
**Material of Construction**  
**Body&Cap** : SS304 / SS316 / SS316L / Carbon Steel(WCB)  
**Sealing Gaskets** : PTFE(White) / NBR(Black) / Viton(Black) / Graphite(Black)  
**Sight Glass** : Tempered / Borosilicate / Quartz / Aluminosilicate Glass  
**Connection Method** : ANSI 150LB / 300LB, JIS 5K / 10K, DIN, GB Flange  
**Max.Working Temp** : 100°C / 212°F for NBR / Viton Gasket  
 200°C / 392°F for PTFE Gasket  
**Max.Operating Pressure** : 1.6MPa / 16Bar Tempered Glass (Up to 5.0MPa Customization)  
**Applicable Medium** : Water / Oil / Gas / Air / Liquids Etc

**LSMSFI**



Wenzhou Luosimeng Machinery Co.Ltd.

**LSMSFI**



Wenzhou Luosimeng Machinery Co.Ltd.

**LSMSFI**



Wenzhou Luosimeng Machinery Co.Ltd.

**LSMSFI**



Wenzhou Luosimeng Machinery Co.Ltd.

**Product Model** : [SG-ZT41-83](#)  
**Product Sizes** : DN15 to DN500(1/2”Inch to 20”Inch)  
**Material of Construction**  
**Body&Cap&Bolt** : SS304 / SS316 / SS316L / Carbon Steel(WCB)  
**Sealing Gaskets** : PTFE(White) / NBR(Black) / Viton(Black) / Graphite(Black)  
**Sight Glass** : Tempered / Borosilicate / Quartz / Aluminosilicate Glass  
**Connection Method** : ANSI 150LB / 300LB, JIS 5K / 10K, DIN, GB Flange  
**Max.Working Temp** : 100°C / 212°F for NBR / Viton Gasket  
 200°C / 392°F for PTFE Gasket  
**Max.Operating Pressure** : 1.6MPa / 16Bar Tempered Glass (Up to 5.0MPa Customization)  
**Applicable Medium** : Water / Oil / Gas / Air / Liquids Etc

**LSMSFI**



Wenzhou Luosimeng Machinery Co.Ltd.

**LSMSFI**



Wenzhou Luosimeng Machinery Co.Ltd.

**LSMSFI**



Wenzhou Luosimeng Machinery Co.Ltd.

**LSMSFI**



Wenzhou Luosimeng Machinery Co.Ltd.

**Product Model** : [SG-ZT11-05](#)  
**Product Sizes** : DN6 to DN50(1/8”Inch to 2”Inch)  
**Material of Construction**  
**Body&Cap** : SS304 / SS316 / SS316L / Carbon Steel(WCB) / Brass  
**Sealing Gaskets** : PTFE(Green) / NBR(Black) / Viton(Black)  
**Wiper/Cleaner** : PTFE(Green)/NBR(Black)  
**Sight Glass** : Tempered / Quartz Glass  
**Connection Method** : NPT,BSPT,BSPP Female Thread(Screw)  
**Max.Working Temp** : 100°C / 212°F for NBR / Viton Gasket  
 200°C / 392°F for PTFE Gasket  
**Max.Operating Pressure** : 0.6MPa / 6Bar Tempered Glass (Up to 1.6MPa Customization)  
**Applicable Medium** : Water / Oil / Gas / Air / Liquids Etc



Wenzhou Luosimeng Machinery Co.Ltd.

Wenzhou Luosimeng Machinery Co.Ltd.



Wenzhou Luosimeng Machinery Co.Ltd.

Wenzhou Luosimeng Machinery Co.Ltd.

**Product Model** : [SG-ZT11-051](#)  
**Product Sizes** : DN6 to DN50(1/8”Inch to 2”Inch)  
**Material of Construction**  
**Body&Cap** : SS304 / SS316 / SS316L / Carbon Steel(WCB) / Brass  
**Sealing Gaskets** : PTFE(Green) / NBR(Black) / Viton(Black)  
**Wiper/Cleaner** : PTFE(Green)/NBR(Black)  
**Sight Glass** : Tempered / Quartz Glass  
**Connection Method** : NPT,BSPT,BSPP Female Thread(Screw)  
**Max.Working Temp** : 100°C / 212°F for NBR / Viton Gasket  
 200°C / 392°F for PTFE Gasket  
**Max.Operating Pressure** : 0.6MPa / 6Bar Tempered Glass (Up to 1.6MPa Customization)  
**Applicable Medium** : Water / Oil / Gas / Air / Liquids Etc

**LSMSFI**



Wenzhou Luosimeng Machinery Co.Ltd.

**LSMSFI**



Wenzhou Luosimeng Machinery Co.Ltd.

**LSMSFI**



Wenzhou Luosimeng Machinery Co.Ltd.

**LSMSFI**



Wenzhou Luosimeng Machinery Co.Ltd.

**Product Model** : [SG-001](#)  
**Product Sizes** : DN6 to DN50(1/8" Inch to 2" Inch)  
**Material of Construction**  
**Body&Cap** : SS304 / SS316 / SS316L / Carbon Steel(WCB)  
**Sealing Gaskets** : PTFE(Green) / NBR(Black) / Viton(Black) / Graphite(Black)  
**Sight Glass** : Tempered / Borosilicate / Quartz / Aluminosilicate Glass  
**Connection Method** : Socket Weld / Butt Weld / NPT,BSPT,BSPP Female Thread(Screw)  
**Max.Working Temp** : 100°C / 212°F for NBR / Viton Gasket  
200°C / 392°F for PTFE Gasket  
**Max.Operating Pressure** : 1.6MPa / 16Bar Tempered Glass (Up to 5.0MPa Customization)  
**Applicable Medium** : Water / Oil / Gas / Air / Liquids Etc

**LSMSFI**



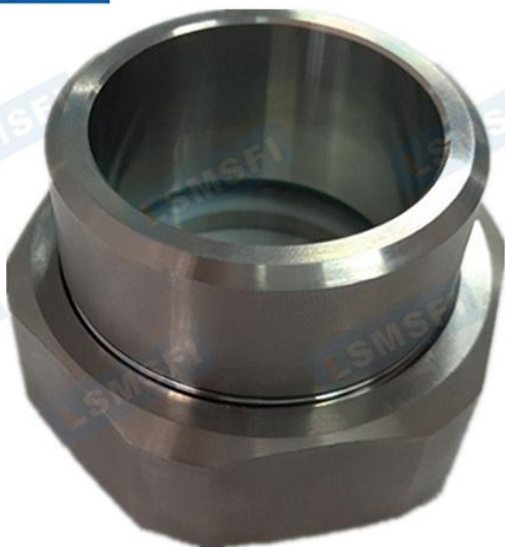
Wenzhou Luosimeng Machinery Co.Ltd.

**LSMSFI**



Wenzhou Luosimeng Machinery Co.Ltd.

**LSMSFI**



Wenzhou Luosimeng Machinery Co.Ltd.

**LSMSFI**



Wenzhou Luosimeng Machinery Co.Ltd.

**Product Model** : [SG-ZT61-30](#)  
**Product Sizes** : DN6 to DN50(1/8”Inch to 2”Inch)  
**Material of Construction**  
**Body&Cap** : SS304 / SS316 / SS316L / Carbon Steel(WCB)  
**Sealing Gaskets** : PTFE(White) / NBR(Black) / Viton(Black) / Graphite(Black)  
**Sight Glass** : Tempered / Borosilicate / Quartz / Aluminosilicate Glass  
**Paint Material** : Common Anti-rust Paint and Blue Paint  
**Connection Method** : Socket Weld/Butt Weld  
**Max.Working Temp** : 100°C / 212°F for NBR / Viton Gasket  
 200°C / 392°F for PTFE Gasket  
**Max.Operating Pressure** : 1.6MPa / 16Bar Tempered Glass (Up to 5.0MPa Customization)  
**Applicable Medium** : Water / Oil / Gas / Air / Liquids Etc



Wenzhou Luosimeng Machinery Co.Ltd.

Wenzhou Luosimeng Machinery Co.Ltd.



Wenzhou Luosimeng Machinery Co.Ltd.

Wenzhou Luosimeng Machinery Co.Ltd.

**Product Model** : [SG-ZT81-68](#)  
**Product Sizes** : DN6 to DN50(1/8”Inch to 2”Inch)  
**Material of Construction**  
**Body&Cap&Bolt** : SS304 / SS316 / SS316L / Carbon Steel(WCB)  
**Sealing Gaskets** : PTFE(White) / NBR(Black) / Viton(Black) / Graphite(Black)  
**Sight Glass** : Tempered / Borosilicate / Quartz / Aluminosilicate Glass  
**Paint Material** : Common Anti-rust Paint and Blue Paint  
**Connection Method** : Sanitary Tri-Clamp or Ferrule  
**Max.Working Temp** : 100°C / 212°F for NBR / Viton Gasket  
 200°C / 392°F for PTFE Gasket  
**Max.Operating Pressure** : 1.6MPa / 16Bar Tempered Glass (Up to 5.0MPa Customization)  
**Applicable Medium** : Water / Oil / Gas / Air / Liquids Etc



Wenzhou Luosimeng Machinery Co.Ltd.

Wenzhou Luosimeng Machinery Co.Ltd.



Wenzhou Luosimeng Machinery Co.Ltd.

Wenzhou Luosimeng Machinery Co.Ltd.

**Product Model** : [SG-ZT41-206P](#)  
**Product Sizes** : DN15 to DN100(1/2”Inch to 4”Inch)  
**Material of Construction**  
**Body&Cap&Bolt** : SS304 / SS316 / SS316L / Carbon Steel(WCB)  
**Sealing Gaskets** : PTFE(White) / NBR(Black) / Viton(Black) / Graphite(Black)  
**Sight Glass** : Tempered / Borosilicate / Quartz / Aluminosilicate Glass  
**Connection Method** : ANSI 150LB / 300LB, JIS 5K / 10K, DIN, GB Flange  
**Max.Working Temp** : 100°C / 212°F for NBR / Viton Gasket  
 200°C / 392°F for PTFE Gasket  
**Max.Operating Pressure** : 1.6MPa / 16Bar Tempered Glass (Up to 5.0MPa Customization)  
**Applicable Medium** : Water / Oil / Gas / Air / Liquids Etc

**LSMSFI**



Wenzhou Luosimeng Machinery Co.Ltd.

**LSMSFI**



Wenzhou Luosimeng Machinery Co.Ltd.

**LSMSFI**



Wenzhou Luosimeng Machinery Co.Ltd.

**LSMSFI**



Wenzhou Luosimeng Machinery Co.Ltd.

**Product Model** : [SG-ZT110](#)  
**Product Sizes** : DN15 to DN100(1/2”Inch to 4”Inch)  
**Material of Construction**  
**Body&Cap&Link** : SS304 / SS316 / SS316L / Carbon Steel(WCB)  
**Sealing Gaskets** : PTFE(White) / NBR(Black) / Viton(Black) / Silicone(White)  
**Sight Glass** : Tempered / Quartz Glass  
**Connection Method** : ANSI 150LB / 300LB, JIS 5K / 10K, DIN, GB Flange  
**Max.Working Temp** : 100°C / 212°F for NBR / Viton / Silicone Gasket  
 200°C / 392°F for PTFE Gasket  
**Max.Operating Pressure** : 0.6MPa / 6Bar Tempered Glass (Up to 1.6MPa Customization)  
**Applicable Medium** : Water / Oil / Gas / Air / Liquids Etc



Wenzhou Luosimeng Machinery Co.Ltd.



Wenzhou Luosimeng Machinery Co.Ltd.



Wenzhou Luosimeng Machinery Co.Ltd.



Wenzhou Luosimeng Machinery Co.Ltd.

**Product Model** : [SG-ZT300](#)  
**Product Sizes** : DN15 to DN300(1/2”Inch to 12”Inch)  
**Material of Construction**  
**Body&Flange&Link** : SS304 / SS316 / SS316L / Carbon Steel(WCB)  
**Sealing Gaskets** : PTFE(White) / NBR(Black) / Viton(Black) / Silicone(White)  
**Sight Glass** : Tempered / Quartz Glass  
**Connection Method** : ANSI 150LB / 300LB, JIS 5K / 10K, DIN, GB Flange  
**Max.Working Temp** : 100°C / 212°F for NBR / Viton / Silicone Gasket  
 200°C / 392°F for PTFE Gasket  
**Max.Operating Pressure** : 0.6MPa / 6Bar Tempered Glass (Up to 1.6MPa Customization)  
**Applicable Medium** : Water / Oil / Gas / Air / Liquids Etc

**LSMSFI**



Wenzhou Luosimeng Machinery Co.Ltd.

**LSMSFI**



Wenzhou Luosimeng Machinery Co.Ltd.

**LSMSFI**



Wenzhou Luosimeng Machinery Co.Ltd.

**LSMSFI**



Wenzhou Luosimeng Machinery Co.Ltd.

**Product Model** : [SG-ZT220](#)  
**Product Sizes** : DN15 to DN100(1/2”Inch to 4”Inch)  
**Material of Construction**  
**Body&Cap&Link** : SS304 / SS316 / SS316L / Carbon Steel(WCB)  
**Sealing Gaskets** : PTFE(White) / NBR(Black) / Viton(Black) / Silicone(White)  
**Sight Glass** : Tempered / Quartz Glass  
**Connection Method** : NPT,BSPT,BSPP Female Thread(Screw)  
**Max.Working Temp** : 100°C / 212°F for NBR / Viton / Silicone Gasket  
 200°C / 392°F for PTFE Gasket  
**Max.Operating Pressure** : 0.6MPa / 6Bar Tempered Glass (Up to 1.6MPa Customization)  
**Applicable Medium** : Water / Oil / Gas / Air / Liquids Etc



Wenzhou Luosimeng Machinery Co.Ltd.



Wenzhou Luosimeng Machinery Co.Ltd.



Wenzhou Luosimeng Machinery Co.Ltd.



Wenzhou Luosimeng Machinery Co.Ltd.

**Product Model** : [SG-FQ11-4](#)  
**Product Sizes** : DN6 to DN100(1/8" Inch to 4" Inch)  
**Material of Construction**  
**Body&Cap** : SS304 / SS316 / SS316L / Carbon Steel(WCB)  
**Sealing Gaskets** : PTFE(White) / NBR(Black) / Viton(Black) / Graphite(Black)  
**Sight Glass** : Tempered / Borosilicate / Quartz / Aluminosilicate Glass  
**Floating Ball** : Plastic(Red/Blue) / PTFE(Red/Blue)  
**Connection Method** : NPT,BSPT,BSPP Female Thread(Screw)  
**Max.Working Temp** : 100°C / 212°F for NBR / Viton Gasket  
 200°C / 392°F for PTFE Gasket  
**Max.Operating Pressure** : 1.6MPa / 16Bar Tempered Glass (Up to 5.0MPa Customization)  
**Applicable Medium** : Water / Oil / Gas / Air / Liquids Etc



Wenzhou Luosimeng Machinery Co.Ltd.

Wenzhou Luosimeng Machinery Co.Ltd.



Wenzhou Luosimeng Machinery Co.Ltd.

Wenzhou Luosimeng Machinery Co.Ltd.

**Product Model** : [SG-FQ11-4](#)  
**Product Sizes** : DN6 to DN25(1/8”Inch to 1”Inch)  
**Material of Construction**  
**Body&Cap** : SS304 / SS316 / SS316L / Carbon Steel(WCB)  
**Sealing Gaskets** : PTFE(White) / NBR(Black) / Viton(Black) / Graphite(Black)  
**Sight Glass** : Tempered / Borosilicate / Quartz / Aluminosilicate Glass  
**Floating Ball** : PTFE(Red/Blue)  
**Connection Method** : NPT,BSPT,BSPP Female Thread(Screw)  
**Max.Working Temp** : 100°C / 212°F for NBR / Viton Gasket  
 200°C / 392°F for PTFE Gasket  
**Max.Operating Pressure** : 1.6MPa / 16Bar Tempered Glass (Up to 5.0MPa Customization)  
**Applicable Medium** : Water / Oil / Gas / Air / Liquids Etc



Wenzhou Luosimeng Machinery Co.Ltd.

Wenzhou Luosimeng Machinery Co.Ltd.



Wenzhou Luosimeng Machinery Co.Ltd.

Wenzhou Luosimeng Machinery Co.Ltd.

**Product Model** : [SG-FQ41-4](#)  
**Product Sizes** : DN15 to DN100(1/2”Inch to 4”Inch)  
**Material of Construction**  
**Body&Cap** : SS304 / SS316 / SS316L / Carbon Steel(WCB)  
**Sealing Gaskets** : PTFE(White) / NBR(Black) / Viton(Black) / Graphite(Black)  
**Sight Glass** : Tempered / Borosilicate / Quartz / Aluminosilicate Glass  
**Floating Ball** : Plastic(Red/Blue) / PTFE(Red/Blue)  
**Connection Method** : ANSI 150LB / 300LB, JIS 5K / 10K, DIN, GB Flange  
**Max.Working Temp** : 100°C / 212°F for NBR / Viton Gasket  
 200°C / 392°F for PTFE Gasket  
**Max.Operating Pressure** : 1.6MPa / 16Bar Tempered Glass (Up to 5.0MPa Customization)  
**Applicable Medium** : Water / Oil / Gas / Air / Liquids Etc



Wenzhou Luosimeng Machinery Co.Ltd.

Wenzhou Luosimeng Machinery Co.Ltd.



Wenzhou Luosimeng Machinery Co.Ltd.

Wenzhou Luosimeng Machinery Co.Ltd.

**Product Model** : [:SG-FQ11-26](#)  
**Product Sizes** : DN6 to DN25(1/8”Inch to 1”Inch)  
**Material of Construction**  
**Body&Cap** : SS304 / SS316 / SS316L / Carbon Steel(WCB)  
**Sealing Gaskets** : PTFE(White) / NBR(Black) / Viton(Black) / Graphite(Black)  
**Sight Glass** : Tempered / Borosilicate / Quartz / Aluminosilicate Glass  
**Floating Ball** : Plastic(Red/Blue) / PTFE(Red/Blue)  
**Connection Method** : NPT,BSPT,BSPP Female Thread(Screw)  
**Max.Working Temp** : 100°C / 212°F for NBR / Viton Gasket  
 200°C / 392°F for PTFE Gasket  
**Max.Operating Pressure** : 1.6MPa / 16Bar Tempered Glass (Up to 5.0MPa Customization)  
**Applicable Medium** : Water / Oil / Gas / Air / Liquids Etc



**Product Model** : [SG-FQ11-26A](#)  
**Product Sizes** : DN6 to DN50(1/8”Inch to 2”Inch)  
**Material of Construction**  
**Body&Cap** : SS304 / SS316 / SS316L / Carbon Steel(WCB)  
**Sealing Gaskets** : PTFE(White) / NBR(Black) / Viton(Black) / Graphite(Black)  
**Sight Glass** : Tempered / Borosilicate / Quartz / Aluminosilicate Glass  
**Floating Ball** : Plastic(Red/Blue) / PTFE(Red/Blue)  
**Connection Method** : NPT,BSPT,BSPP Male Thread(Screw)  
**Max.Working Temp** : 100°C / 212°F for NBR / Viton Gasket  
 200°C / 392°F for PTFE Gasket  
**Max.Operating Pressure** : 1.6MPa / 16Bar Tempered Glass (Up to 5.0MPa Customization)  
**Applicable Medium** : Water / Oil / Gas / Air / Liquids Etc



**Product Model** : [SG-FQ11-032](#)  
**Product Sizes** : DN6 to DN25(1/8”Inch to 1”Inch)  
**Material of Construction**  
**Body&Cap** : SS304 / SS316 / SS316L / Brass  
**Sealing Gaskets** : PTFE(White) / NBR(Black) / Viton(Black) / Graphite(Black)  
**Sight Glass** : Tempered Glass  
**Floating Ball** : Plastic(Red/Blue) / PTFE(Red/Blue)  
**Connection Method** : NPT,BSPT,BSPP Female / Male Thread(Screw)  
**Max.Working Temp** : 100°C / 212°F for NBR / Viton Gasket  
 200°C / 392°F for PTFE Gasket  
**Max.Operating Pressure** : 0.6MPa / 6Bar Tempered Glass  
**Applicable Medium** : Water / Oil / Gas / Air / Liquids Etc

**LSMSFI**



Wenzhou Luosimeng Machinery Co.Ltd.

**LSMSFI**



Wenzhou Luosimeng Machinery Co.Ltd.

**LSMSFI**



Wenzhou Luosimeng Machinery Co.Ltd.

**LSMSFI**



Wenzhou Luosimeng Machinery Co.Ltd.

**Product Model** : [SG-FQ11-038A](#)  
**Product Sizes** : DN6 to DN25(1/8”Inch to 1”Inch)  
**Material of Construction**  
**Body&Cap** : SS304 / SS316 / SS316L / Carbon Steel(WCB)  
**Sealing Gaskets** : PTFE(White) / NBR(Black) / Viton(Black) / Graphite(Black)  
**Sight Glass** : Tempered Glass  
**Floating Ball** : Plastic(Red/Blue) / PTFE(Red/Blue)  
**Connection Method** : NPT,BSPT,BSPP Female Thread(Screw)  
**Max.Working Temp** : 100°C / 212°F for NBR / Viton Gasket  
 200°C / 392°F for PTFE Gasket  
**Max.Operating Pressure** : 0.6MPa / 6Bar Tempered Glass  
**Applicable Medium** : Water / Oil / Gas / Air / Liquids Etc



**Product Model** : [SG-FQ11-038](#)  
**Product Sizes** : DN6 to DN25(1/8”Inch to 1”Inch)  
**Material of Construction**  
**Body&Cap** : SS304 / SS316 / SS316L / Carbon Steel(WCB)  
**Sealing Gaskets** : PTFE(White) / NBR(Black) / Viton(Black) / Graphite(Black)  
**Sight Glass** : Tempered / Borosilicate / Quartz / Aluminosilicate Glass  
**Floating Ball** : Plastic(Red/Blue) / PTFE(Red/Blue)  
**Connection Method** : NPT,BSPT,BSPP Female / Male Thread(Screw)  
**Max.Working Temp** : 100°C / 212°F for NBR / Viton Gasket  
 200°C / 392°F for PTFE Gasket  
**Max.Operating Pressure** : 1.6MPa / 16Bar Tempered Glass (Up to 2.5MPa Customization)  
**Applicable Medium** : Water / Oil / Gas / Air / Liquids Etc



Wenzhou Luosimeng Machinery Co.Ltd.



Wenzhou Luosimeng Machinery Co.Ltd.



Wenzhou Luosimeng Machinery Co.Ltd.



Wenzhou Luosimeng Machinery Co.Ltd.

**Product Model** : [SG-FQ11-038](#)  
**Product Sizes** : DN6 to DN25(1/8”Inch to 1”Inch)  
**Material of Construction**  
**Body&Cap** : SS304 / SS316 / SS316L / Carbon Steel(WCB)  
**Sealing Gaskets** : PTFE(White) / NBR(Black) / Viton(Black) / Graphite(Black)  
**Sight Glass** : Tempered / Borosilicate / Quartz / Aluminosilicate Glass  
**Floating Ball** : Plastic(Red/Blue) / PTFE(Red/Blue)  
**Connection Method** : NPT,BSPT,BSPP Female Thread(Screw)  
**Max.Working Temp** : 100°C / 212°F for NBR / Viton Gasket  
 200°C / 392°F for PTFE Gasket  
**Max.Operating Pressure** : 1.6MPa / 16Bar Tempered Glass (Up to 2.5MPa Customization)  
**Applicable Medium** : Water / Oil / Gas / Air / Liquids Etc



Wenzhou Luosimeng Machinery Co.Ltd.

Wenzhou Luosimeng Machinery Co.Ltd.



Wenzhou Luosimeng Machinery Co.Ltd.

Wenzhou Luosimeng Machinery Co.Ltd.

**Product Model** : [SG-FQ41-038](#)  
**Product Sizes** : DN15 to DN25(1/2”Inch to 1”Inch)  
**Material of Construction**  
**Body&Cap** : SS304 / SS316 / SS316L / Carbon Steel(WCB)  
**Sealing Gaskets** : PTFE(White) / NBR(Black) / Viton(Black) / Graphite(Black)  
**Sight Glass** : Tempered / Borosilicate / Quartz / Aluminosilicate Glass  
**Floating Ball** : Plastic(Red/Blue) / PTFE(Red/Blue)  
**Connection Method** : ANSI 150LB / 300LB, JIS 5K / 10K, DIN, GB Flange  
**Max.Working Temp** : 100°C / 212°F for NBR / Viton Gasket  
 200°C / 392°F for PTFE Gasket  
**Max.Operating Pressure** : 1.6MPa / 16Bar Tempered Glass (Up to 2.5MPa Customization)  
**Applicable Medium** : Water / Oil / Gas / Air / Liquids Etc



Wenzhou Luosimeng Machinery Co.Ltd.

Wenzhou Luosimeng Machinery Co.Ltd.



Wenzhou Luosimeng Machinery Co.Ltd.

Wenzhou Luosimeng Machinery Co.Ltd.

**Product Model** : [SG-FQ11-066](#)  
**Product Sizes** : DN6 to DN65(1/8”Inch to 2 1/2”Inch)  
**Material of Construction**  
**Body&Cap** : SS304 / SS316 / SS316L / Carbon Steel(WCB)  
**Sealing Gaskets** : PTFE(White) / NBR(Black) / Viton(Black) / Graphite(Black)  
**Sight Glass** : Tempered / Borosilicate / Quartz / Aluminosilicate Glass  
**Floating Ball** : Plastic(Red/Blue) / PTFE(Red/Blue)  
**Connection Method** : NPT,BSPT,BSPP Female Thread(Screw)  
**Max.Working Temp** : 100°C / 212°F for NBR / Viton Gasket  
 200°C / 392°F for PTFE Gasket  
**Max.Operating Pressure** : 1.6MPa / 16Bar Tempered Glass (Up to 5.0MPa Customization)  
**Applicable Medium** : Water / Oil / Gas / Air / Liquids Etc



**Product Model** : [SG-FQ11-82](#)  
**Product Sizes** : DN6 to DN100(1/8”Inch to 4”Inch)  
**Material of Construction**  
**Body&Cap&Bolt** : SS304 / SS316 / SS316L / Carbon Steel(WCB)  
**Sealing Gaskets** : PTFE(White) / NBR(Black) / Viton(Black) / Graphite(Black)  
**Sight Glass** : Tempered / Borosilicate / Quartz / Aluminosilicate Glass  
**Floating Ball** : Plastic(Red/Blue) / PTFE(Red/Blue)  
**Connection Method** : NPT,BSPT,BSPP Female Thread(Screw)  
**Max.Working Temp** : 100°C / 212°F for NBR / Viton Gasket  
 200°C / 392°F for PTFE Gasket  
**Max.Operating Pressure** : 1.6MPa / 16Bar Tempered Glass (Up to 5.0MPa Customization)  
**Applicable Medium** : Water / Oil / Gas / Air / Liquids Etc



Wenzhou Luosimeng Machinery Co.Ltd.



Wenzhou Luosimeng Machinery Co.Ltd.



Wenzhou Luosimeng Machinery Co.Ltd.



Wenzhou Luosimeng Machinery Co.Ltd.

**Product Model** : [SG-FQ41-103](#)  
**Product Sizes** : DN15 to DN65(1/2”Inch to 2 1/2”Inch)  
**Material of Construction**  
**Body&Cap&Bolt** : SS304 / SS316 / SS316L / Carbon Steel(WCB)  
**Sealing Gaskets** : PTFE(White) / NBR(Black) / Viton(Black) / Graphite(Black)  
**Sight Glass** : Tempered / Borosilicate / Quartz / Aluminosilicate Glass  
**Floating Ball** : Plastic(Red/Blue) / PTFE(Red/Blue)  
**Connection Method** : ANSI 150LB / 300LB, JIS 5K / 10K, DIN, GB Flange  
**Max.Working Temp** : 100°C / 212°F for NBR / Viton Gasket  
 200°C / 392°F for PTFE Gasket  
**Max.Operating Pressure** : 1.6MPa / 16Bar Tempered Glass (Up to 5.0MPa Customization)  
**Applicable Medium** : Water / Oil / Gas / Air / Liquids Etc

